

Major & Chromatic Scales Flute



C Major

Musical notation for the C Major scale in 4/4 time, starting on middle C. The scale is written in a single staff with a treble clef. It consists of a series of eighth notes ascending and then descending, with a final whole note C. A large slur covers the entire scale.

F Major

Musical notation for the F Major scale in 4/4 time, starting on F4. The scale is written in a single staff with a treble clef and one flat in the key signature. It consists of a series of eighth notes ascending and then descending, with a final whole note F. A large slur covers the entire scale.

B \flat Major

Musical notation for the B-flat Major scale in 4/4 time, starting on B \flat 4. The scale is written in a single staff with a treble clef and two flats in the key signature. It consists of a series of eighth notes ascending and then descending, with a final whole note B \flat . A large slur covers the entire scale.

E \flat Major*

Musical notation for the E-flat Major scale in 4/4 time, starting on E \flat 4. The scale is written in a single staff with a treble clef and three flats in the key signature. It consists of a series of eighth notes ascending and then descending, with a final whole note E \flat . A large slur covers the entire scale.

A \flat Major*

Musical notation for the A-flat Major scale in 4/4 time, starting on A \flat 4. The scale is written in a single staff with a treble clef and four flats in the key signature. It consists of a series of eighth notes ascending and then descending, with a final whole note A \flat . A large slur covers the entire scale.

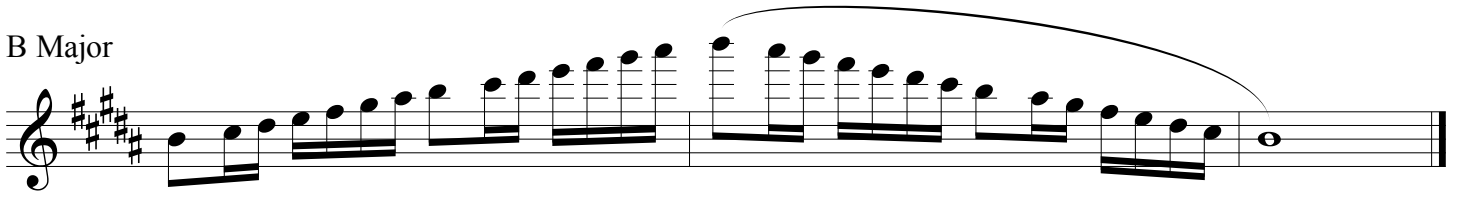
D \flat Major*

Musical notation for the D-flat Major scale in 4/4 time, starting on D \flat 4. The scale is written in a single staff with a treble clef and five flats in the key signature. It consists of a series of eighth notes ascending and then descending, with a final whole note D \flat . A large slur covers the entire scale.

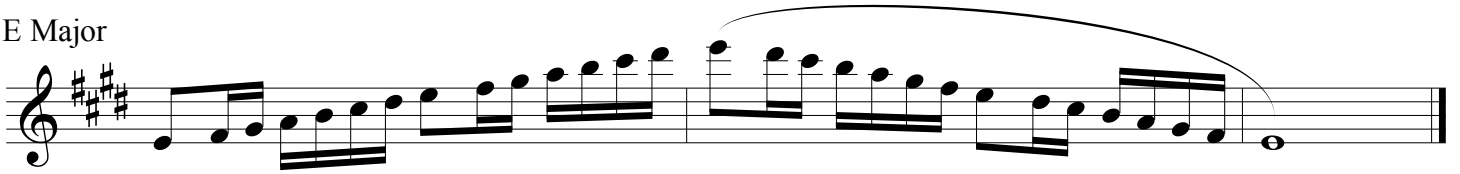
G \flat Major

Musical notation for the G-flat Major scale in 4/4 time, starting on G \flat 4. The scale is written in a single staff with a treble clef and six flats in the key signature. It consists of a series of eighth notes ascending and then descending, with a final whole note G \flat . A large slur covers the entire scale.

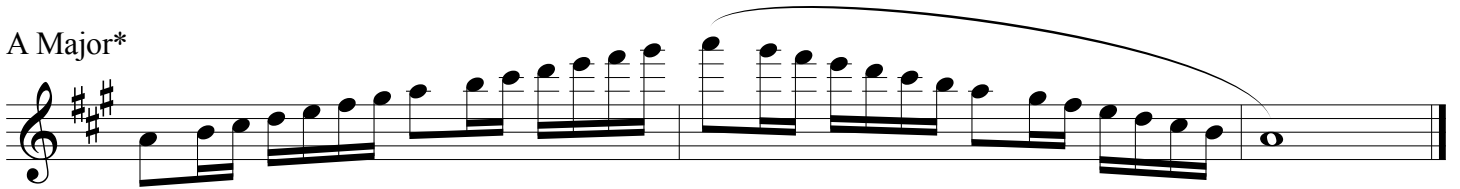
B Major



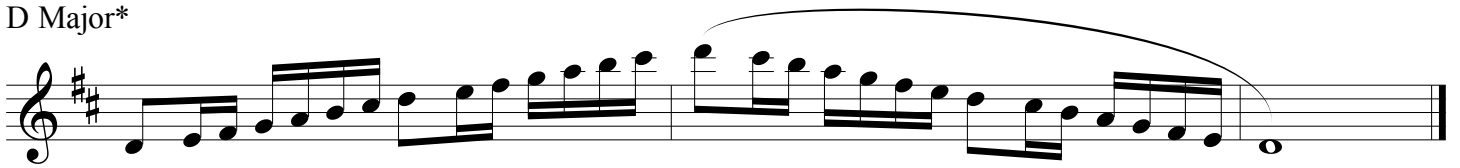
E Major



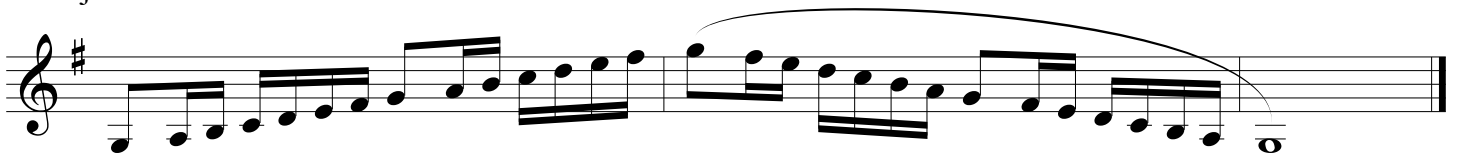
A Major*



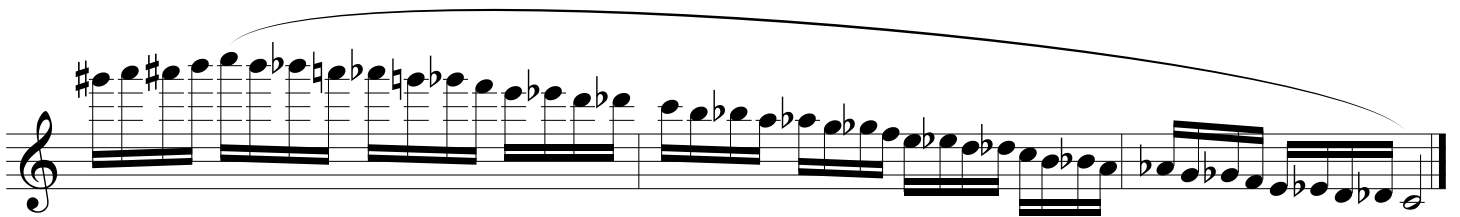
D Major*



G Major*



Chromatic Scale



1. Tempo is $\text{♩} = 72$

2. Scales marked with an asterisk (*) are required for District IV Honor Band on odd numbered audition years.

3. Scales without an asterisk (*) are required for District IV Honor Band on even numbered audition years.

4. Chromatic scale is required for District IV Honor Band every year.

5. All scales are required for LMEA All-State every year.

6. Rhythm, articulation, and tempo must be adhered to.