

Major & Chromatic Scales

Flute



C Major



F Major



B^b Major



E^b Major*



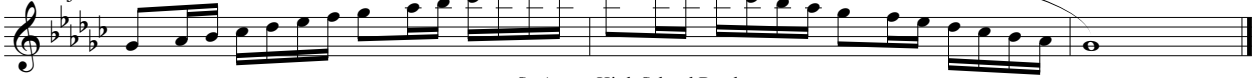
A^b Major*



D^b Major*



G^b Major



B Major



E Major



A Major*



D Major*



G Major*



Chromatic Scale



The image displays seven musical staves for flute. The first five staves represent major scales: B Major (three sharps), E Major (four sharps), A Major* (three sharps), D Major* (two sharps), and G Major* (one sharp). Each of these scales is written in a single line with a treble clef and a key signature of one sharp (F#). The notes are grouped into eighth-note pairs, and the entire scale is encompassed by a long, sweeping slur. The sixth staff is labeled 'Chromatic Scale' and is written in a single line with a treble clef and a key signature of one flat (Bb). It consists of two lines of eighth notes, each line containing a full chromatic scale from C4 to C5. The notes are grouped into eighth-note pairs, and the entire scale is encompassed by a long, sweeping slur.

1. Tempo is $\text{♩} = 72$

2. Scales marked with an asterisk (*) are required for District IV Honor Band on odd numbered audition years.

3. Scales without an asterisk (*) are required for District IV Honor Band on even numbered audition years.

4. Chromatic scale is required for District IV Honor Band every year.