

Major & Chromatic Scales

Bassoon



C Major

Musical notation for the C Major scale in bass clef, 4/4 time. The scale is written as a single line of music with a long slur over the entire scale. The notes are: C2, C3, C4, C5, C6, C7, G7, F7, E7, D7, C8.

F Major

Musical notation for the F Major scale in bass clef, 4/4 time. The scale is written as a single line of music with a long slur over the entire scale. The notes are: F2, F3, F4, F5, F6, F7, C7, Bb7, Ab7, Gb7, F8.

Bb Major

Musical notation for the Bb Major scale in bass clef, 4/4 time. The scale is written as a single line of music with a long slur over the entire scale. The notes are: Bb2, Bb3, Bb4, Bb5, Bb6, Bb7, F7, Eb7, Db7, Cb7, Bb8.

Eb Major*

Musical notation for the Eb Major scale in bass clef, 4/4 time. The scale is written as a single line of music with a long slur over the entire scale. The notes are: Eb2, Eb3, Eb4, Eb5, Eb6, Eb7, Bb7, Ab7, Gb7, Fb7, Eb8.

Ab Major*

Musical notation for the Ab Major scale in bass clef, 4/4 time. The scale is written as a single line of music with a long slur over the entire scale. The notes are: Ab2, Ab3, Ab4, Ab5, Ab6, Ab7, F7, Eb7, Db7, Cb7, Ab8.

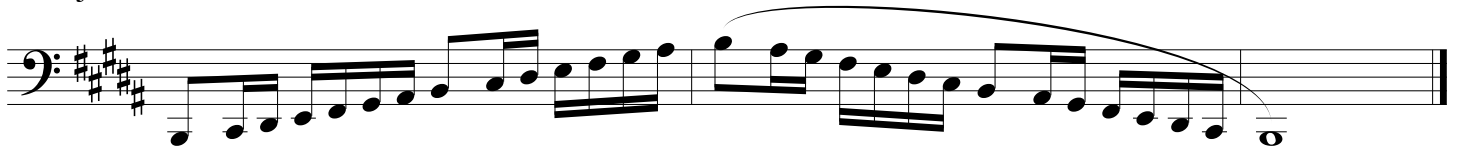
Db Major*

Musical notation for the Db Major scale in bass clef, 4/4 time. The scale is written as a single line of music with a long slur over the entire scale. The notes are: Db2, Db3, Db4, Db5, Db6, Db7, Bb7, Ab7, Gb7, Fb7, Db8.

Gb Major

Musical notation for the Gb Major scale in bass clef, 4/4 time. The scale is written as a single line of music with a long slur over the entire scale. The notes are: Gb2, Gb3, Gb4, Gb5, Gb6, Gb7, Db7, Cb7, Bb7, Ab7, Gb8.

B Major



E Major



A Major*



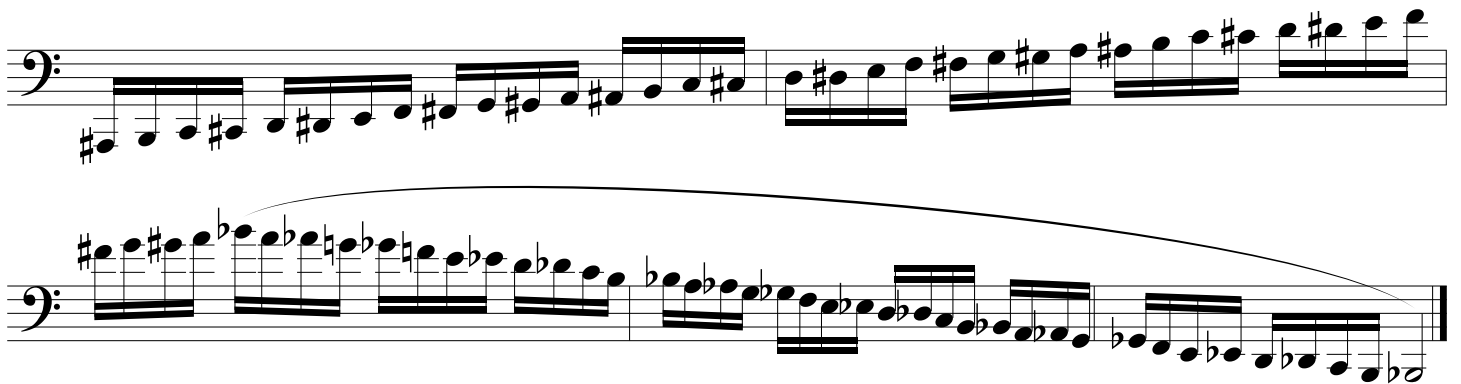
D Major*



G Major*



Chromatic Scale



1. Tempo is $\text{♩} = 72$

2. Scales marked with an asterisk (*) are required for District IV Honor Band on odd numbered audition years.

3. Scales without an asterisk (*) are required for District IV Honor Band on even numbered audition years.

4. Chromatic scale is required for District IV Honor Band every year.

5. All scales are required for LMEA All-State every year.

6. Rhythm, articulation, and tempo must be adhered to.